

FOR MESSRS :

SPECIFICATION FOR REFERENCE

(FOR LCD MNT 12" APPLICATION PURPOSE)

TFT LCD BACKLIGHTING INVERTERPART NO. : FI1521-05BBUYER'S PART NO.:

CONTENTS

- 1. Electrical Characteristics**
- 2. Functional Pin Description**
- 3. Mechanical Drawings**

1. Electrical Characteristics

► Input Voltage(Vdc) : 11.0 ~13.0

No.	Items (Unit)	Sign.	Condition		Min.	Typ.	Max.
1	Input Current (A)	I _{in}	V _{in} =12V	CTRL=5V	0.35	0.45	0.55
				CTRL=0V	0.6	0.7	0.8
2	Output Current 1,2(mA)	I _{out1,2}	V _{in} =12V	CTRL=5V	1.8	2.8	3.8
				CTRL=0V	5.4	6.2	7.0
3	Output Current 3,4(mA)	I _{out3,4}	V _{in} =12V	CTRL=5V	0	0	0
				CTRL=0V	0	0	0
4	Lamp Frequency (kHz)	f	V _{in} =12V	CTRL=0V	50	54	60
5	ON/OFF Control	ON	V _{in} =12V, ON/OFF=5V		Normal Operation		
		OFF	V _{in} =12V, ON/OFF=0V		Shunt-down (Lamp off)		
6	Dim Adjust (Lamp Current Control)	CTRL	CTRL=0V, Max Current		0.0 ~ 5.0 Volt.		
			CTRL=5V, Min Current				
7	Kick-Off Voltage(Vrms)	V _{k-off}	Kick-Off		MORE THAN 1300		

2.Functional Pin Description

2.1. Input Connector CN1 : 12505WR-10A00 (YEON-H0, R:MOLEX)

Pin No.	Symbol	Description
1	CTRL	Dim Adjust, Apply 0V ~ 5Vdc to Control Lamp Current 0V : 6.2mA, 5V : 2.8mA (Each Lamp)
3,4,7,8	GND	GND
5	ON / OFF	Power System Return (5V:ON, 0V:OFF)
9,10	Vin	Input Voltage : 12V \pm 1V

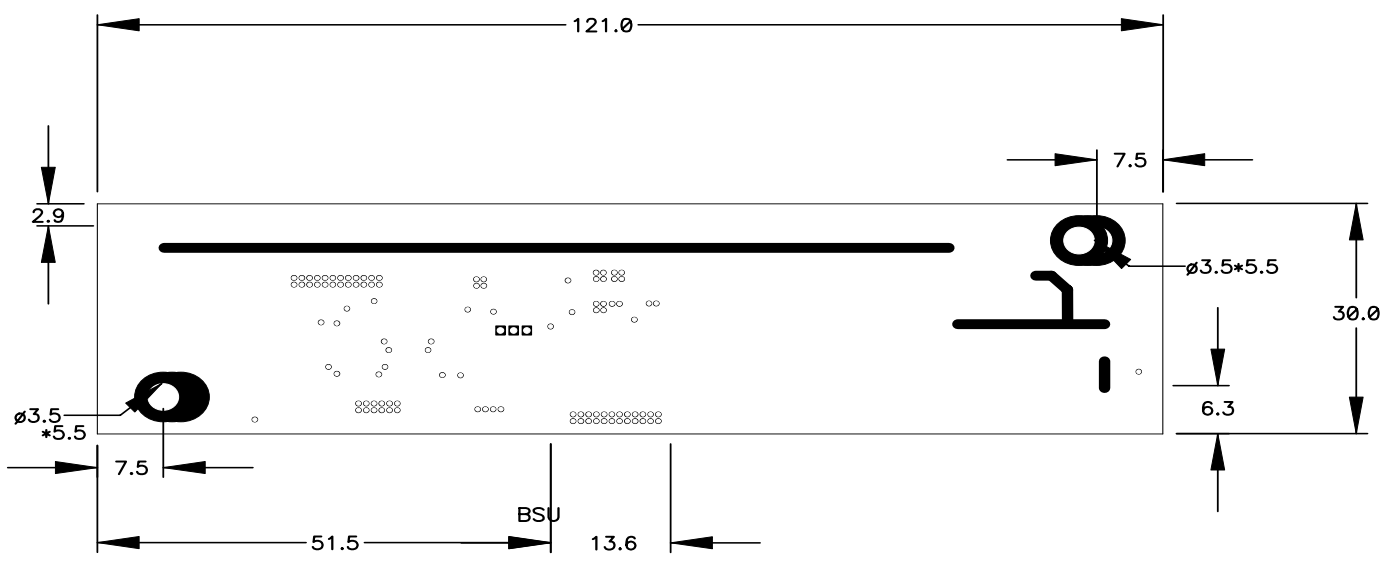
2-2. Output Connector CN2,CN3 : 20015WR-05A00 (YEON-H0, R:MOLEX)

Pin No.	Symbol	Description
1	Lamp H1	High Voltage Connection to high side of Lamp.
2	Lamp L1	Low Voltage Connection to low side of Lamp.

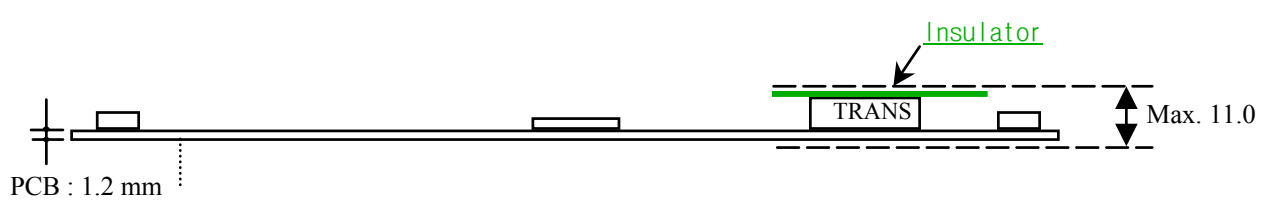
3.Mechanical Drawings

*. Unit : mm
*.Tolerance : ± 0.2mm

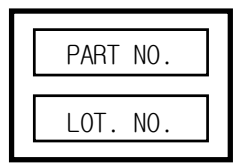
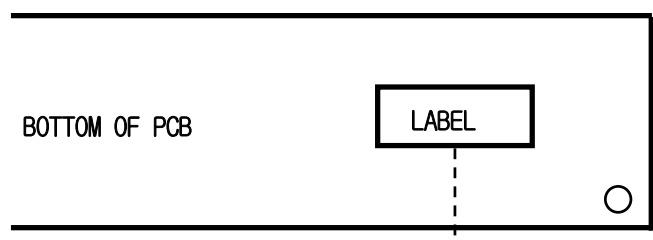
3-1.P.W.B



3-2.Trans & Insulator



3-3.Marking



*. PART NO. : FIF1521-05B
 *. LOT NO. : F ○ ○ ○ ○ ○ ○ ○ ○
 ↓ ↓ ↓ ↓
 LINE YEAR MONTH DAY