

FOR MESSRS :  

---

# SPECIFICATION FOR MANUFACTURE

(FOR LCD MNT 15.1" APPLICATION PURPOSE)

TFT LCD BACKLIGHTING INVERTER

PART NO. : FIF1521-07A

BUYER'S PART NO.:

## CONTENTS

- 1. Electrical Characteristics**
- 2. Functional Pin Description**
- 3. Mechanical Drawings**
- 4. Circuit**
- 5. Part List**
- 6. BOM.**

APPROVED BY

제 정 일	'02.10.28	TFT LCD BACKLIGHTING	(주)프론텍	
개 정 일		15.1" INVERTER SPECIFICATION (본규격은 ㈜프론텍 내부 관리용 규격입니다.)	P/NO.	PAGE
개 정 번 호	0		FIF1521-07A	1/3

## 1. Electrical Characteristics

No.	Items (Unit)	Sign.	Condition	Min.	Typ.	Max.	
1	Input Voltage (Vdc)	Vin		11.0	12	13.0	
2	Input Current (A)	Iin	Vin=12V	CTRL=5V	0.8	0.15	0.23
				CTRL=0V	0.78	0.88	0.98
3	Output Current 1,2(mA)	Iout1,2	Vin=12V	CTRL=5V	2.0	3.0	4.0
				CTRL=0V	7.5	8.2	8.9
4	Output Current 3,4(mA)	Iout3,4	Vin=12V	CTRL=5V	0	0	0
				CTRL=0V	0	0	0
5	Lamp Frequency (kHz)	f	Vin=12V	CTRL=0V	41	46	51
6	ON/OFF Control	ON	Vin=12V, ON/OFF=5V		Normal Operation		
		OFF	Vin=12V, ON/OFF=0V		Shunt-down (Lamp off)		
7	Dim Adjust (Lamp Current Control)	CTRL	CTRL=0V, Max Current		0 ~ 5 Volt.		
			CTRL=5V, Min Current				
8	Kick-Off Voltage(Vrms)	Vk-off	Kick-Off		1100	-	1800
9	PWM Control Frequency(Hz)	Fpwm			130	145	160

제 정 일	'02.10.28	TFT LCD BACKLIGHTING	(주)프론텍	
개 정 일		15.1" INVERTER SPECIFICATION (본규격은 ㈜프론텍 내부 관리용 규격입니다.)	P/NO.	PAGE
개 정 번 호	0		FIF1521-07A	2/3

## 2. Functional Pin Description

### 2.1. Input Connector CN1 : 12505WR-10A00 (YEON-H0, R:MOLEX)

Pin No.	Symbol	Description
1	CTRL	Dim Adjust, Apply 0V ~ 5Vdc to Control Lamp Current 0V : 8.2mA, 5V : 3.0mA (Each Lamp)
3,4,7,8	GND	GND
5	ON / OFF	Power System Return ( 5V:ON, 0V:OFF )
9,10	Vin	Input Voltage : 12V ± 1V

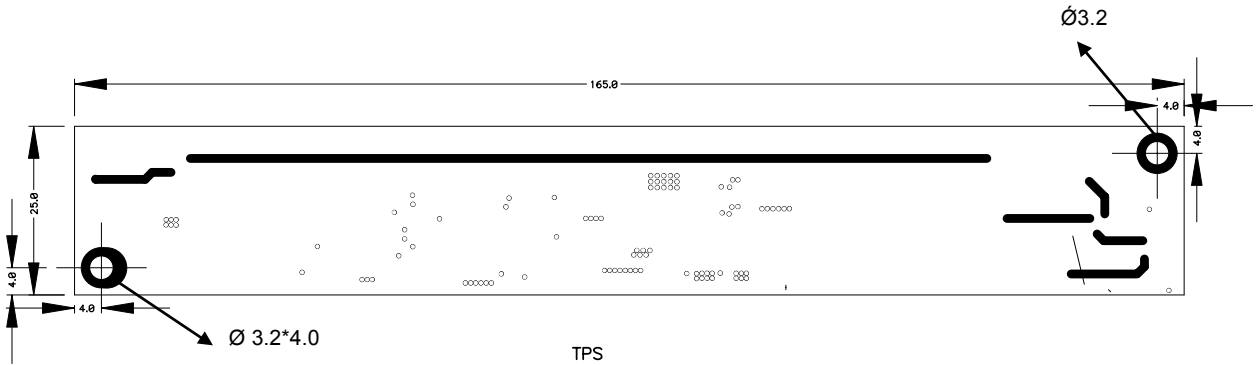
### 2-2. Output Connector CN2,CN3 : 20015WR-05A00 (YEON-H0, R:MOLEX)

Pin No.	Symbol	Description
1	Lamp H1	High Voltage Connection to high side of Lamp.
2	Lamp L1	Low Voltage Connection to low side of Lamp.

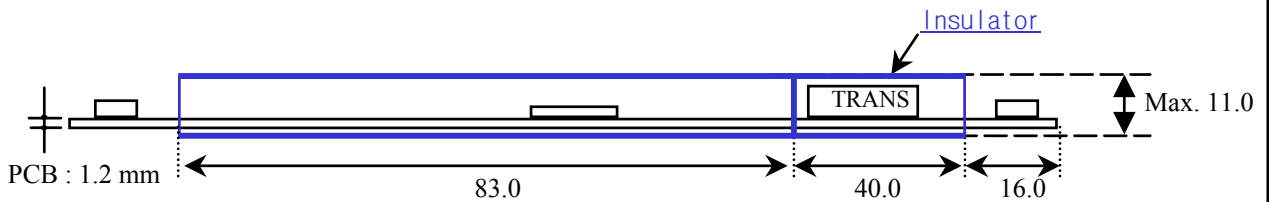
제 정 일	'02.10.28	TFT LCD BACKLIGHTING	(주)프론텍	
개 정 일		15.1" INVERTER SPECIFICATION (본규격은 ㈜프론텍 내부 관리용 규격입니다.)	P/NO.	PAGE
개 정 번호	0		FIF1521-07A	3/3

### 3.Mechanical Drawings

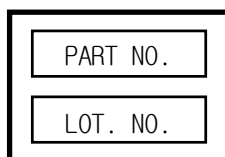
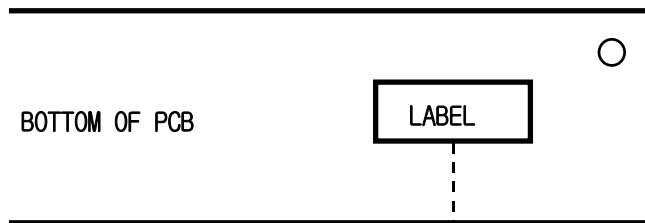
#### 3-1.P.W.B



#### 3-2.Trans & Insulator



#### 3-3.Marking



\*. PART NO. : FIF1521-07A  
 \*. LOT NO. : FA ○○○○○○

LINE YEAR MONTH DAY