

FOR : \_\_\_\_\_

## **SPECIFICATION FOR REFERENCE**

(FOR LCD TV / MNT 15" APPLICATION)

TFT LCD BACKLIGHTING INVERTER

PART NO. : FIF1521-31B

BUYER'S PART NO.: \_\_\_\_\_

### **CONTENTS**

- 1. Electrical Characteristics**
- 2. Functional Pin Description**
- 3. Mechanical Drawings**

## 1. Electrical Characteristics

Analog dimming

No.	Items (Unit)	Sign.	Condition	Min.	Typ.	Max.	
1	Input Voltage (Vdc)	Vin		11.5	12	12.5	
2	Input Current (A)	Iin	Vin=12V	CTRL=5V	0.3	0.45	0.6
				CTRL=0V	0.75	0.92	1.0
3	Output Current 1,2(mA)	Iout1,2	Vin=12V	CTRL=5V	1.7	3.0	4.3
				CTRL=0V	7.0	8.0	8.9
4	Output Current 3,4(mA)	Iout3,4	Vin=12V	CTRL=5V	0	0	0
				CTRL=0V	0	0	0
5	Lamp Frequency (kHz)	f	Vin=12V	CTRL=0V	40	50	60
6	ON/OFF Control	ON	Vin=12V, ON/OFF=5V		Normal Operation		
		OFF	Vin=12V, ON/OFF=0V		Shunt-down (Lamp off)		
7	Dim Adjust (Lamp Current Control)	CTRL	CTRL=0V,Max Current		0 ~ 5 Volt.		
			CTRL=5V,Min Current				
8	Kick-Off Voltage(Vrms)	Vk-off	Kick-Off		More than 1300		
9							

## 2. Functional Pin Description

### 2.1. Input Connector CN1 : 12505WR-10A00 (YEON-HO, R:MOLEX)

Pin No.	Symbol	Description
1	CTRL	Dim Adjust, Apply 0V ~ 5Vdc to Control Lamp Current 0V : 8.0mA, 5V : 3.0mA (Each Lamp)
3,4,7,8	GND	GND
5	ON / OFF	Power System Return ( 5V:ON, 0V:OFF )
9,10	Vin	Input Voltage : 12V $\pm$ 0.5V

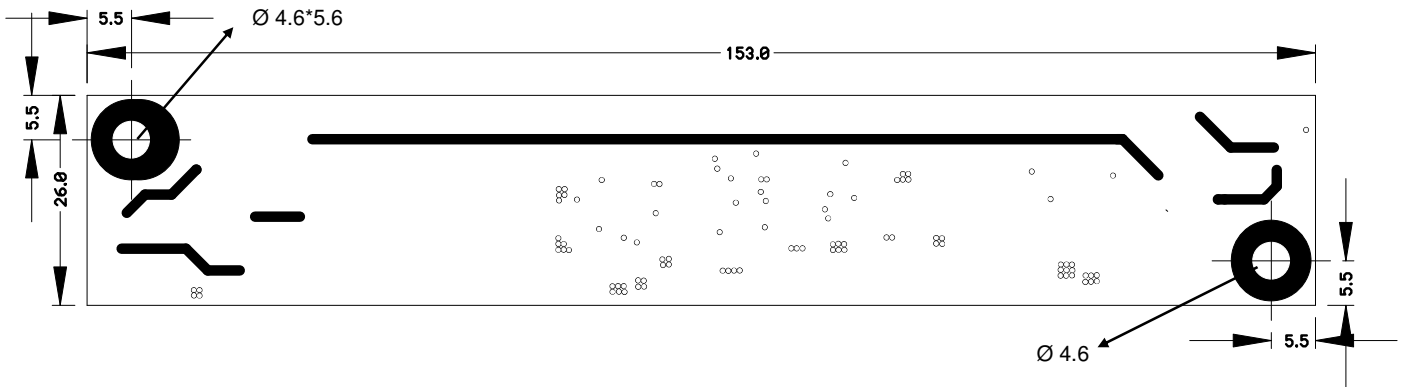
### 2.2. Output Connector CN2,CN3 : 20015WR-05A00 (YEON-HO, R:MOLEX)

Pin No.	Symbol	Description
1	Lamp H1	High Voltage Connection to high side of Lamp.
2	Lamp L1	Low Voltage Connection to low side of Lamp.

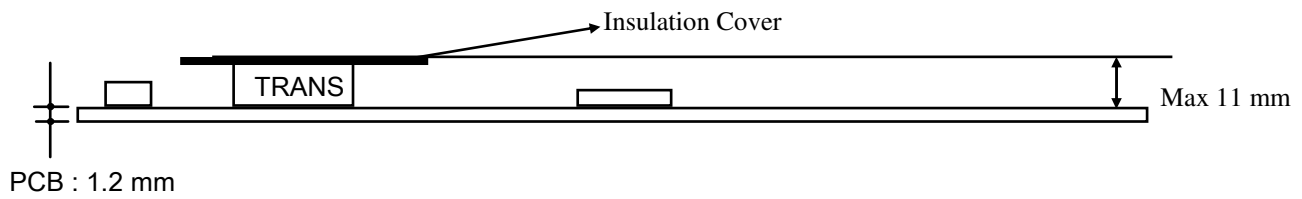
### 3.Mechanical Drawings

#### 3-1.P.W.B

\*. Unit : mm  
\*.Tolerance : ± 0.2mm



#### 3-2. Component Max Height



#### 3-3.Marking

