

# **SPECIFICATION FOR REFERENCE**

(FOR LCD MNT 15" APPLICATION PURPOSE)

TFT LCD BACKLIGHTING INVERTER

PART NO. : FIF1521-34A

BUYER'S PART NO.:

## **CONTENTS**

- 1. Electrical Characteristics**
- 2. Functional Pin Description**
- 3. Mechanical Drawings**

## 1. Electrical Characteristics

► Input Voltage(Vdc) : 11.5 ~12.5

No.	Items (Unit)	Sign.	Condition		Min.	Typ.	Max.
1	Input Current (A)	I <sub>in</sub>	V <sub>in</sub> =12V	CTRL=0V	0.8	0.95	1.05
				CTRL=5V	0.3	0.5	0.7
2	Output Current 1,2(mA)	I <sub>out1,2</sub>	V <sub>in</sub> =12V	CTRL=0V	7.2	8.2	9.0
				CTRL=5V	3.0	4.0	5.0
3	Lamp Frequency (kHz)	f	V <sub>in</sub> =12V	CTRL=5V	40	44	50
4	ON/OFF Control	ON	V <sub>in</sub> =12V, ON/OFF=5V		Normal Operation		
		OFF	V <sub>in</sub> =12V, ON/OFF=0V		Shunt-down (Lamp off)		
5	Dim Adjust (Lamp Current Control)	CTRL	CTRL=0V,Max Current		0.0 ~ 5.0 Volt.		
			CTRL=5V,Min Current				
6	Kick-Off Voltage(Vrms)	V <sub>k-off</sub>	Kick-Off		MORE THAN 1100		

## 2. Functional Pin Description

### 2.1. Input Connector CN1 : 12505WR-06A00 (YEON-HO)

Pin No.	Symbol	Description
1.2	Vin	Input Voltage : 12V $\pm$ 0.5V
3.4	GND	GND
6	CTRL	Dim Adjust, Apply 0V ~ 5Vdc to Control Lamp Current 0 V : 8.2mA, 5V : 4.0mA (Each Lamp)
5	ON / OFF	Power System Return ( 5V:ON, 0V:OFF )

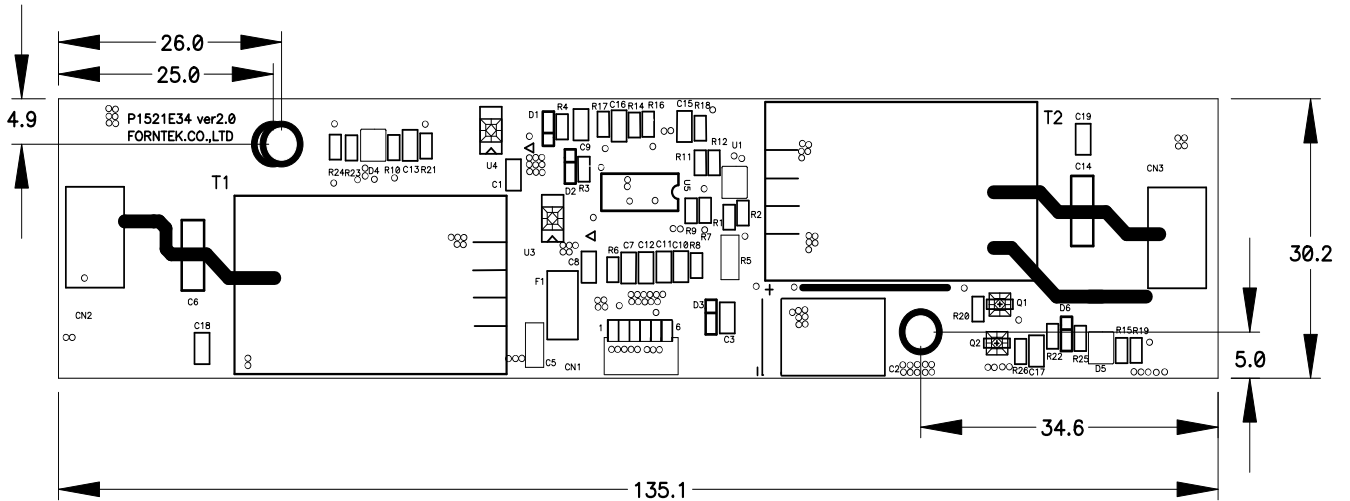
### 2.2. Output Connector :20015WR-05A00 (Yeon Ho,MOLEX,JOINT TECH)

Pin No.	Symbol	Description
1	Lamp H1	High Voltage connection to high side of lamp.
2	Lamp L1	Low Voltage connection to low side of lamp.

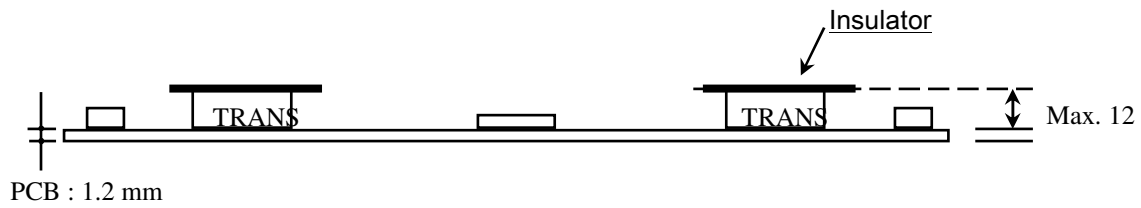
### 3.Mechanical Drawings

#### 3-1.P.W.B

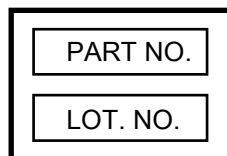
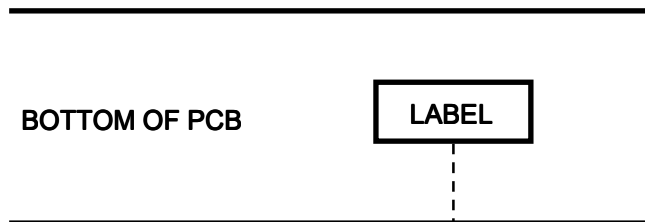
\*. Unit : mm  
 \*.Tolerance : ± 0.2mm



#### 3-2.Trans & Insulator



#### 3-3.Marking



\*. PART NO. : FIF1521-34A  
 \*. LOT NO. : ○○○○○○  
 YEAR MONTH DAY