

# **SPECIFICATION FOR REFERENCE**

(FOR LCD MNT 17" APPLICATION PURPOSE)

TFT LCD BACKLIGHTING INVERTER

PART NO. : FIF1542-32A

BUYER'S PART NO.:

## **CONTENTS**

- 1. Electrical Characteristics**
- 2. Functional Pin Description**
- 3. Mechanical Drawings**

## 1. Electrical Characteristics

- ▶ Input Voltage(Vdc) : 11.0 ~13.0
- ▶ Analog dimming

No.	Items (Unit)	Sign.	Condition		Min.	Typ.	Max.
1	Input Current (A)	I <sub>in</sub>	V <sub>in</sub> =12V	CTRL=0V	1.45	1.6	1.8
				CTRL=5V	0.3	0.5	0.7
2	Output Current 1,2(mA)	I <sub>out1,2</sub>	V <sub>in</sub> =12V	CTRL=0V	5.3	6.0	7.0
				CTRL=5V	2.0	3.0	4.0
3	Output Current 3,4(mA)	I <sub>out3,4</sub>	V <sub>in</sub> =12V	CTRL=0V	5.3	6.0	7.0
				CTRL=5V	2.0	3.0	4.0
4	Lamp Frequency (kHz)	f	V <sub>in</sub> =12V	CTRL=5V	40	47	55
5	ON/OFF Control	ON	V <sub>in</sub> =12V, ON/OFF=5V		Normal Operation		
		OFF	V <sub>in</sub> =12V, ON/OFF=0V		Shunt-down (Lamp off)		
6	Dim Adjust (Lamp Current Control)	CTRL	CTRL=0V,Max Current		0.0 ~ 5.0 Volt.		
			CTRL=5V,Min Current				
7	Kick-Off Voltage(V <sub>rms</sub> )	V <sub>k-off</sub>	Kick-Off		MORE THAN 1100		

## 2. Functional Pin Description

### 2.1. Input Connector CN1 : 12505WR-06A00 (YEON-HO)

Pin No.	Symbol	Description
1.2	Vin	Input Voltage : 12V $\pm$ 0.5V
3.4	GND	GND
6	CTRL	Dim Adjust, Apply 0V ~ 5Vdc to Control Lamp Current 0 V : 6.0mA, 5V : 3.0mA (Each Lamp)
5	ON / OFF	Power System Return ( 5V:ON, 0V:OFF )

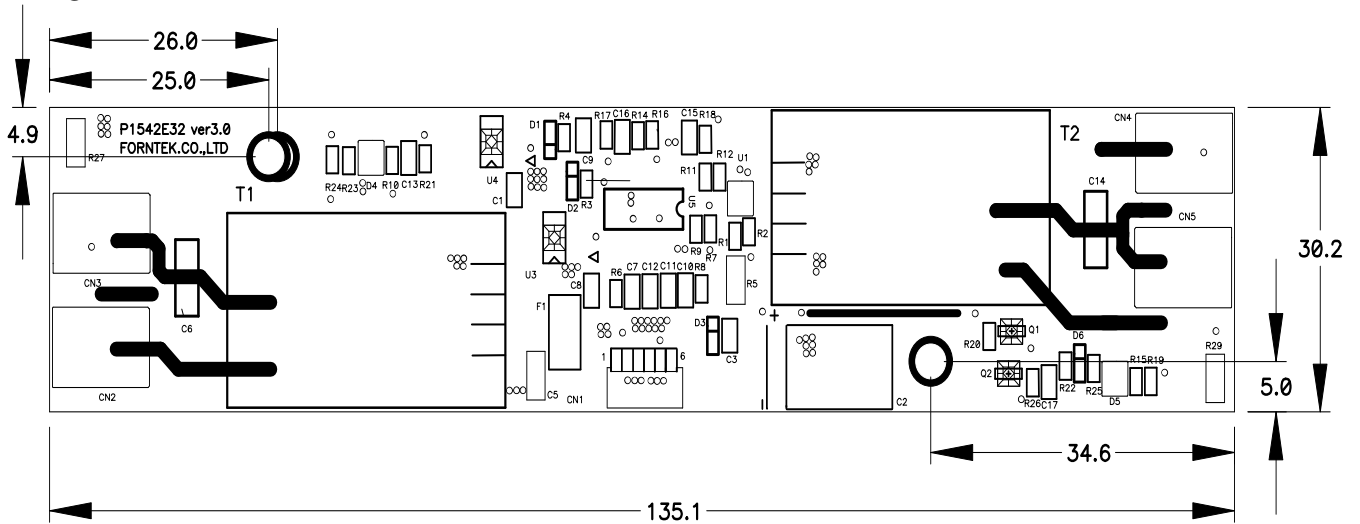
### 2.2. Output Connector CN2,CN3,CN4,CN5 : SM02B-BHS-1-TB (JST,연호,MOLEX)

Pin No.	Symbol	Description
1	Lamp H1	High Voltage connection to high side of lamp.
2	Lamp L1	Low Voltage connection to low side of lamp.

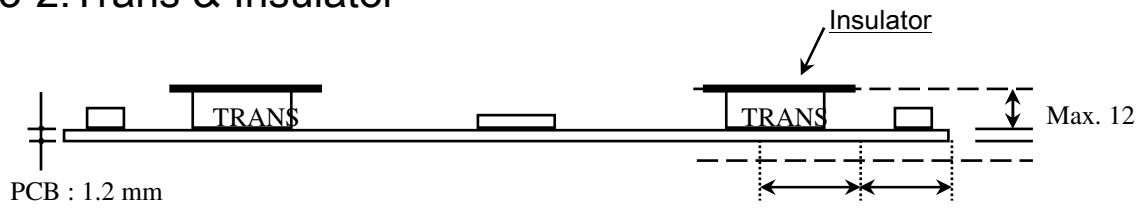
### 3.Mechanical Drawings

\*. Unit : mm  
\*.Tolerance :  $\pm 0.2$ mm

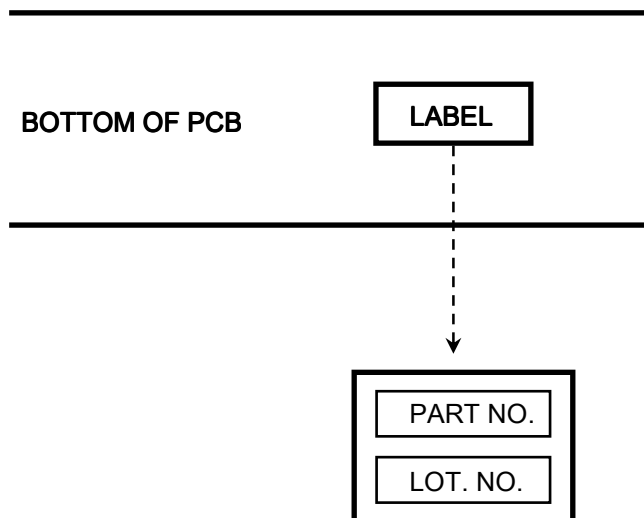
#### 3-1.P.W.B



#### 3-2.Trans & Insulator



#### 3-3.Marking



\*. PART NO. : FIF1542-32A

\*. LOT NO. : ○○○○○○

YEAR MONTH DAY