

FOR : \_\_\_\_\_

# **PRELIMINARY SPECIFICATION**

(FOR LCD MNT 17" 4LAMP APPLICATION)

TFT LCD BACKLIGHTING INVERTER

PART NO. : FIF1742-34B

BUYER'S PART NO.: \_\_\_\_\_

## **CONTENTS**

- 1. Electrical Characteristics**
- 2. Functional Pin Description**
- 3. Mechanical Drawings**

# 1. Electrical Characteristics

▶ Analog Dimming

No.	Items (Unit)	Sign.	Condition	Min.	Typ.	Max.	
1	Input Voltage (Vdc)	Vin		11.5	12	12.5	
2	Input Current (A)	Iin	Vin=12V	CTRL=5V	0.7	1.0	1.3
				CTRL=0V	1.4	1.6	1.9
3	Output Current 1,2(mA)	Iout1,2	Vin=12V	CTRL=5V	2.0	3.0	4.0
				CTRL=0V	5.8	6.3	6.8
4	Output Current 3,4(mA)	Iout3,4	Vin=12V	CTRL=5V	2.0	3.0	4.0
				CTRL=0V	5.8	6.3	6.8
5	Lamp Frequency (kHz)	f	Vin=12V	CTRL=0V	42	47	52
6	ON/OFF Control	ON	Vin=12V, ON/OFF=5V		Normal Operation		
		OFF	Vin=12V, ON/OFF=0V		Shunt-down (Lamp off)		
7	Dim Adjust (Lamp Current Control)	CTRL	CTRL=0V, Max Current		0 ~ 5 Volt.		
			CTRL=5V, Min Current				

## 2. Functional Pin Description

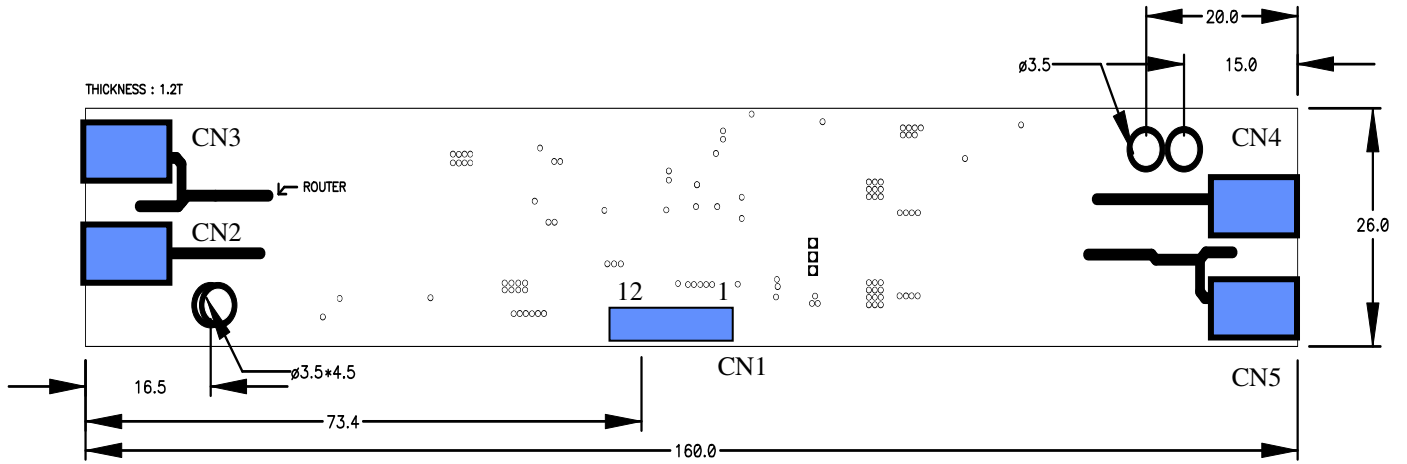
### 2.1. Input Connector CN1 : 12505WR-12A00(YEON-HO) 53261-1290(MOLEX)

Pin No.	Symbol	Description
2	CTRL	Dim Adjust, Apply 0V ~5Vdc to Control Lamp Current 0V : 6.3mA, 5V : 3.0mA (Each Lamp)
1,3,5,6,8,9	GND	GND
4	ON / OFF	Power System Return ( 5V:ON, 0V:OFF )
7	NC	No Connection
10,11,12	Vin	Input Voltage : 12V $\pm$ 0.5V

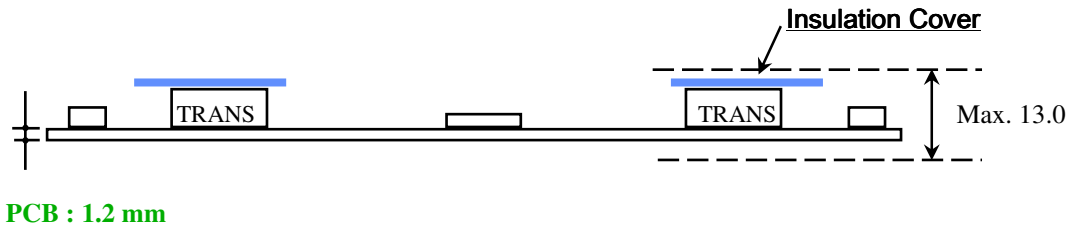
### 2.2. Output Connector CN2,CN3,CN4,CN5 : SM02B-BHS-1-TB (Yeon Ho,MOLEX,JST)

Pin No.	Symbol	Description
1	Lamp H1	High Voltage connection to high side of lamp.
2	Lamp L1	Low Voltage connection to low side of lamp.

### 3. Mechanical Drawing



#### 3-1. Component Max Height



#### 3-2. Marking

