

FOR MESSRS : _____

SPECIFICATION FOR REFERENCE

(FOR LCD MNT 17" APPLICATION PURPOSE)

TFT LCD BACKLIGHTING INVERTER

PART NO. : FIF1742-39A

BUYER'S PART NO.: _____

CONTENTS

- 1. Electrical Characteristics**
- 2. Functional Pin Description**
- 3. Mechanical Drawings**

1. Electrical Characteristics

▶ Analog dimming control

▶ Input Voltage(Vdc) : 11.0 ~13.0

No.	Items (Unit)	Sign.	Condition		Min.	Typ.	Max.
1	Input Current (A)	I _{in}	V _{in} =12V	CTRL=0V	1.55	1.72	1.9
				CTRL=5V	0.8	1.0	1.2
2	Output Current 1,2(mA)	I _{out1,2}	V _{in} =12V	CTRL=0V	5.8	6.4	7.0
				CTRL=5V	2.0	2.7	3.5
3	Output Current 3,4(mA)	I _{out3,4}	V _{in} =12V	CTRL=0V	5.8	6.4	7.0
				CTRL=5V	2.0	2.7	3.5
4	Lamp Frequency (kHz)	f	V _{in} =12V	CTRL=5V	40	45	52
5	ON/OFF Control	ON	V _{in} =12V, ON/OFF=5V		Normal Operation		
		OFF	V _{in} =12V, ON/OFF=0V		Shunt-down (Lamp off)		
6	Dim Adjust (Lamp Current Control)	CTRL	CTRL=0V,Max Current		0.0 ~ 5.0 Volt.		
			CTRL=5V,Min Current				
7	Kick-Off Voltage(Vrms)	V _{k-off}	Kick-Off		MORE THAN 1100		

2. Functional Pin Description

2.1. Input Connector CN1 : 12505WR-12A00 (YEON-HO)

Pin No.	Symbol	Description
10,11,12	Vin	Input Voltage : 12V \pm 1V
1,3.5.6.8.9	GND	GND
2	CTRL	Dim Adjust, Apply 0V ~ 5Vdc to Control Lamp Current 0 V:MAX 5V :MIN
4	ON / OFF	Power System Return (5V:ON, 0V:OFF)

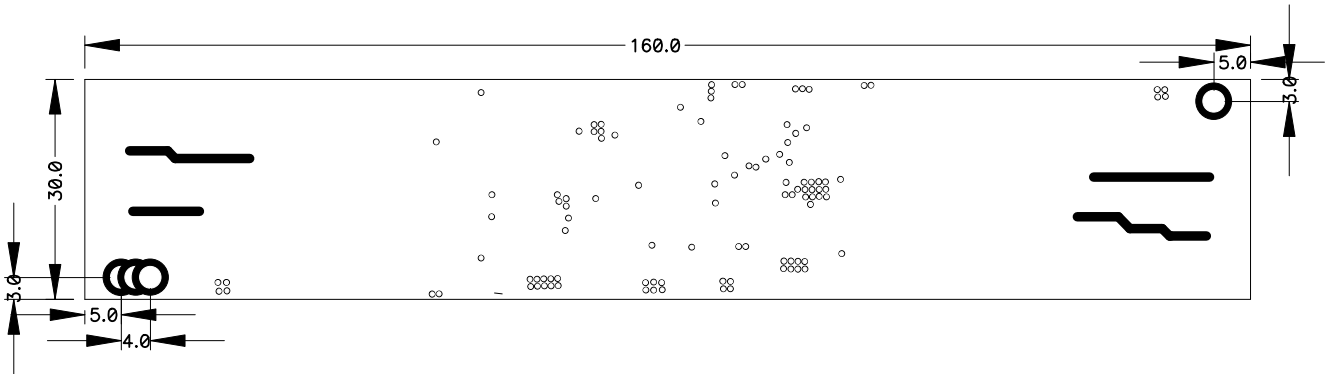
2.2. Output Connector CN2,CN3,CN4,CN5 : SM02B-BHS-1-TB (Yeon Ho,MOLEX,JST)

Pin No.	Symbol	Description
1	Lamp H1	High Voltage connection to high side of lamp.
2	Lamp L1	Low Voltage connection to low side of lamp.

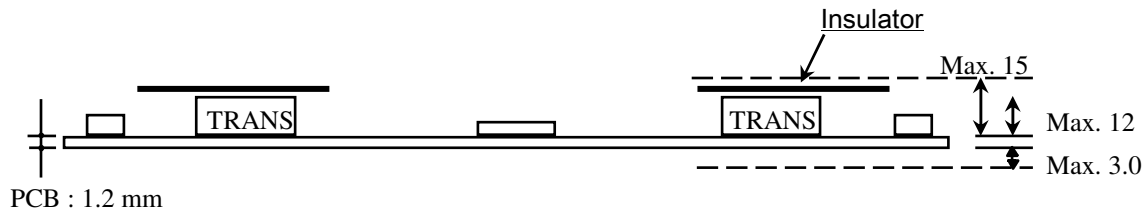
3.Mechanical Drawings

*. Unit : mm
 *.Tolerance : ± 0.2mm

3-1.P.W.B



3-2.Trans & Insulator



3-3.Marking

