

SPECIFICATION FOR MANUFACTURE

(FOR LCD TV/MNT 19" 4 LAMPS APPLICATION PURPOSE)

TFT LCD BACKLIGHTING INVERTER

PART NO. FIF1942-37B

CONTENTS

- 1. Electrical Characteristics**
- 2. Functional Pin Description**
- 3. Mechanical Drawings**

1. Electrical Characteristics

► Analog dimming

No.	Items (Unit)	Sign.	Condition	Min.	Typ.	Max.	
1	Input Voltage (Vdc)	Vin		11.5	12	12.5	
2	Input Current (A)	Iin	Vin=12V	CTRL=5V	0.8	1.2	1.4
				CTRL=0V	1.6	1.9	2.2
3	Output Current 1,2(mA)	Iout1,2	Vin=12V	CTRL=5V	2.0	3.0	4.0
				CTRL=0V	6.5	6.8	7.5
4	Output Current 3,4(mA)	Iout3,4	Vin=12V	CTRL=5V	2.0	3.0	4.0
				CTRL=0V	6.5	6.8	7.5
5	Lamp Frequency (kHz)	f	Vin=12V	CTRL=0V	40	45	50
6	ON/OFF Control	ON	Vin=12V, ON/OFF=5V		Normal Operation		
		OFF	Vin=12V, ON/OFF=0V		Shunt-down (Lamp off)		
7	Dim Adjust (Lamp Current Control)	CTRL	CTRL=0V, Max Current		0 ~ 5 Volt.		
			CTRL=5V, Min Current				

2. Functional Pin Description

2-1. Input Connector CN1 : SMAW200-08 (YEON-HO,MOLEX,JST)

Pin No.	Symbol	Description
1,2,3	Vin	Input Voltage : 12V \pm 0.5V
4,5,6	GND	GND.
7	CTRL	Dim Adjust, Apply 0V ~5Vdc to Control Lamp
8	ON / OFF	Power System Return (5V:ON, 0V:OFF)

2.2. Output Connector CN2,CN3,CN4,CN5 : SM02B-BHS-1-TB (Yeon Ho,MOLEX,JST)

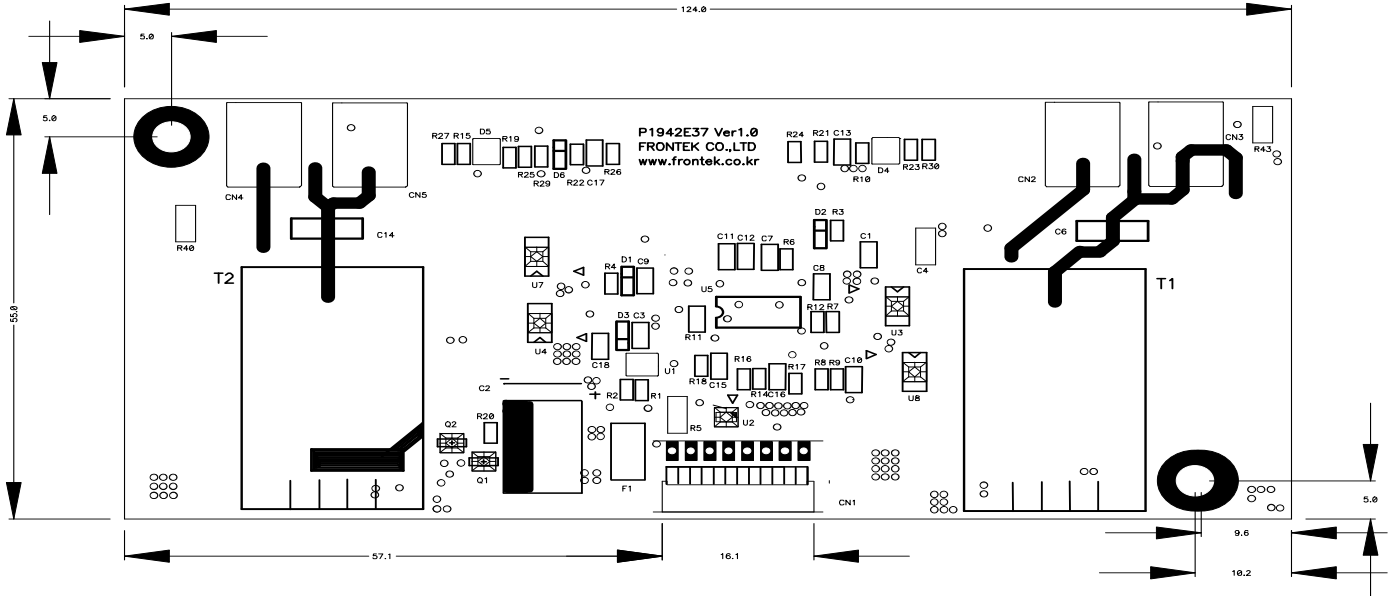
Pin No.	Symbol	Description
1	Lamp H1	High Voltage connection to high side of lamp.
2	Lamp L1	Low Voltage connection to low side of lamp.

3.Mechanical Drawings

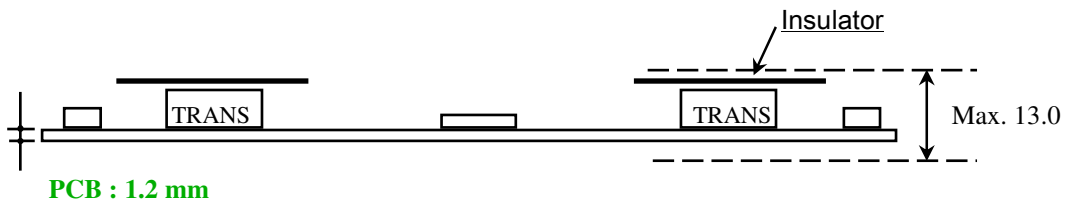
3-1.P.W.B

*. Unit : mm

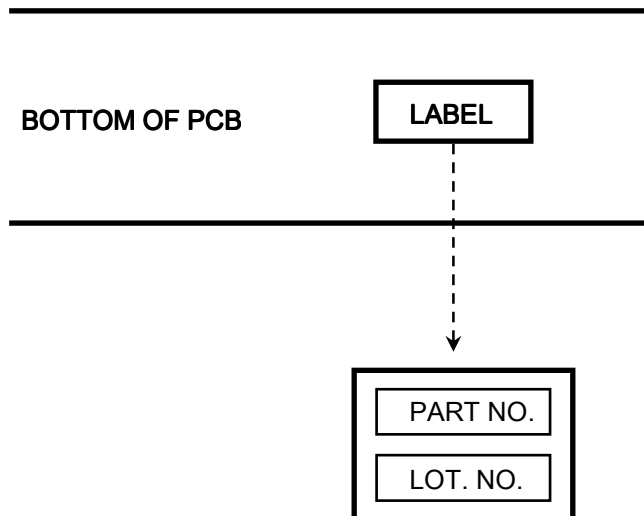
*.Tolerance : ± 0.2mm



3-2.Trans & Insulator



3-3.Marking



*. PART NO. : FIF1942-37B

*. LOT NO. : F ○○○○○○

↙ ↘ ↙ ↘
 LINE YEAR MONTH DAY