

FOR MESSRS :

SPECIFICATION FOR REFERENCE

(FOR LCD MNT 19" 4Lamp APPLICATION PURPOSE)

TFT LCD BACKLIGHTING INVERTER

PART NO. : FIF1942-58B

BUYER'S PART NO.

CONTENTS

- 1. Electrical Characteristics**
- 2. Functional Pin Description**
- 3. Mechanical Drawings**

1. Electrical Characteristics

▶ Analog Dimming

No.	Items (Unit)	Sign.	Condition		Min.	Typ.	Max.
1	Input Voltage (Vdc)	Vin			11.5	12	12.5
2	Input Current (A)	Iin	Vin=12V	CTRL=5V	1.0	1.2	1.4
				CTRL=0V	1.8	2.0	2.2
3	Output Current 1,2(mA)	Iout1,2	Vin=12V	CTRL=5V	2.0	3.0	4.0
				CTRL=0V	6.8	7.3	8.0
4	Output Current 3,4(mA)	Iout3,4	Vin=12V	CTRL=5V	2.0	3.0	4.0
				CTRL=0V	6.8	7.3	8.0
5	Lamp Frequency (kHz)	f	Vin=12V	CTRL=0V	40	45	50
6	ON/OFF Control	ON	Vin=12V, ON/OFF=5V		Normal Operation		
		OFF	Vin=12V, ON/OFF=0V		Shunt-down (Lamp off)		
7	Dim Adjust (Lamp Current Control)	CTRL	CTRL=0V,Max Current		0 ~ 5 Volt.		
			CTRL=5V,Min Current				
8	KICK-OFF VOLTAGE (RMS)		More than 1500Vrms				
9	IGNITION TIME(S)		MIN 1S				

2. Functional Pin Description

2-1. Input Connector CN1 : SMAW200-08 (YEON-HO, MOLEX, JST)

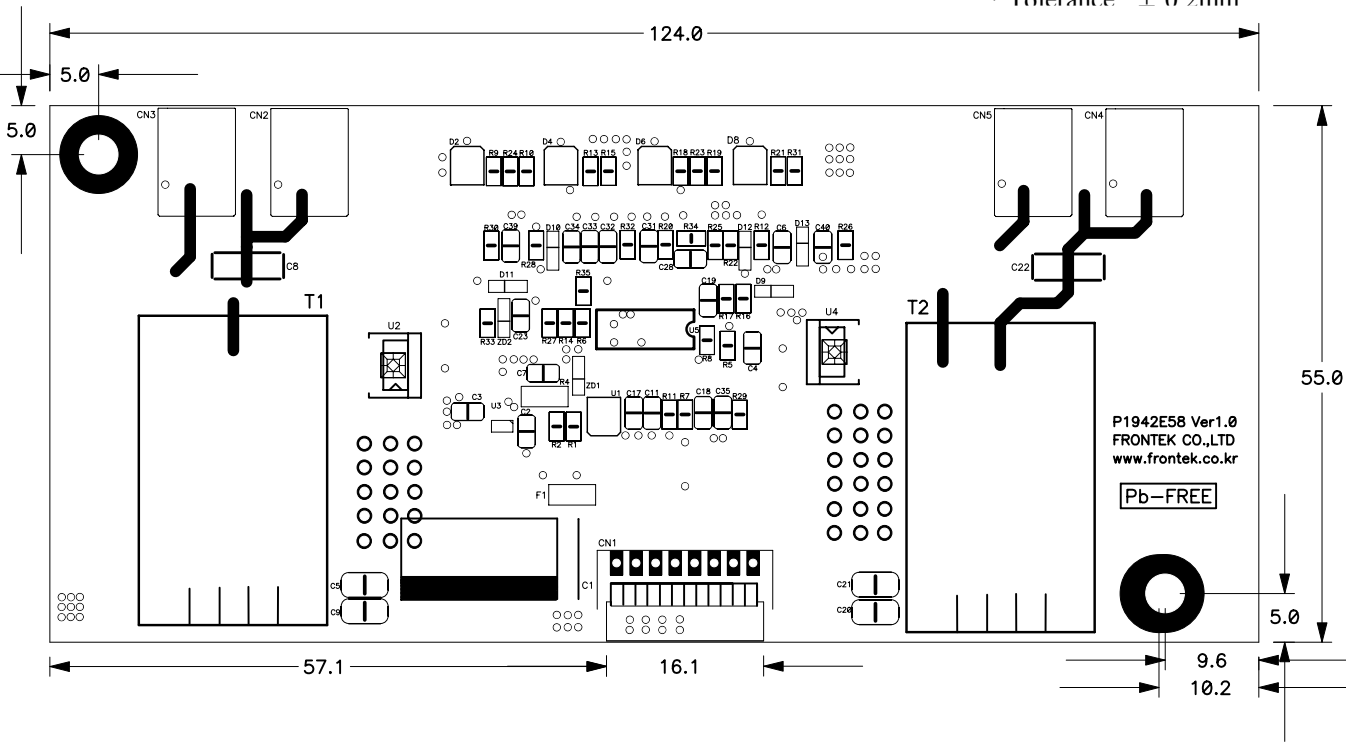
Pin No.	Symbol	Description
1,2,3	Vin	Input Voltage : 12V \pm 0.5V
4,5,6	GND	GND.
7	CTRL	Dim Adjust, Apply 0V ~5Vdc to Control Lamp
8	ON / OFF	Power System Return (5V:ON, 0V:OFF)

2.2. Output Connector CN2,CN3,CN4,CN5 : SM02B-BHS-1-TB (Yeon Ho, MOLEX, JST, CS)

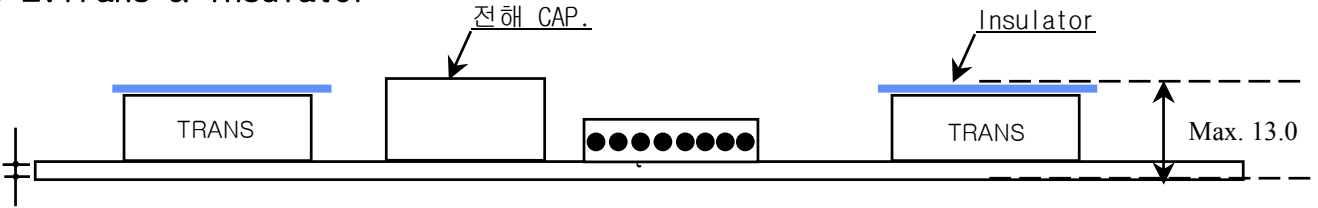
Pin No.	Symbol	Description
1	Lamp H1	High Voltage connection to high side of lamp.
2	Lamp L1	Low Voltage connection to low side of lamp.

3-1.Mechanical Drawing

* Unit : mm
* Tolerance : ± 0.2mm

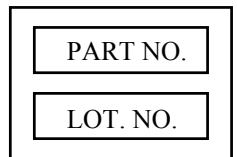
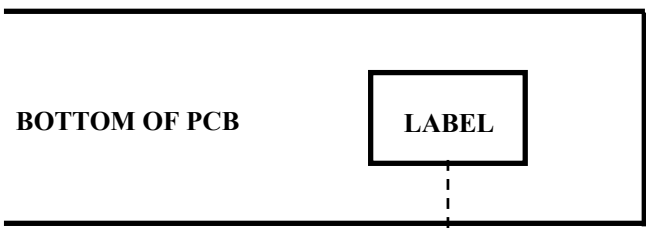


3-2.Trans & Insulator



PCB : 1.2 mm

3-3.Marking



* PART NO. : FIF1942-58B
 * LOT NO. : ○○○○○○
 YEAR MONTH DAY