

FOR MESSRS :

SPECIFICATION FOR REFERENCE

(FOR LCD 20.1"/19" APPLICATION PURPOSE)

TFT LCD BACKLIGHTING INVERTERPART NO. : FIF2064-31BBUYER'S PART NO.:

CONTENTS

- 1. Electrical Characteristics**
- 2. Functional Pin Description**
- 3. Mechanical Drawings**

1. Electrical Characteristics

- ▶ Input Voltage(Vdc) : 11.0 ~13.0
- ▶ Analog Dimming

No.	Items (Unit)	Sign.	Condition		Min.	Typ.	Max.
1	Input Voltage (V)	Vin			11	12	13
2	Input Current (A)	Iin	Vin=12V	CTRL=3.3V	1.8	2.0	2.2
				CTRL=0V	2.8	3.0	3.2
3	Output Current 1,2,3(mA)	Iout1,2 ,3	Vin=12V	CTRL=3.3V	3.0	4.0	5.0
				CTRL=0V	6.0	7.0	8.0
4	Output Current 4,5,6(mA)	Iout4,5 ,6	Vin=12V	CTRL=3.3V	3.0	4.0	5.0
				CTRL=0V	6.0	7.0	8.0
5	Lamp Frequency (kHz)	f	Vin=12V	CTRL=0V	47	51	55
6	ON/OFF Control	ON	Vin=12V, ON/OFF=5V		Normal Operation		
		OFF	Vin=12V, ON/OFF=0V		Shunt-down (Lamp off)		
7	Dim Adjust (Lamp Current Control)	CTRL	CTRL=0V,Max Current		0.0 ~ 3.3Volt.		
			CTRL=3.3V,Min Current				
8	Kick-Off Voltage(Vrms)	Vk-off	Kick-Off		MORE THAN 1430		

2. Functional Pin Description

2.1. Input Connector CN1 : 12505WR-10A00(YEON-H0, JST, MOLEX)

Pin No.	Symbol	Description
1	CTRL	Dim Adjust, Apply 0V ~3.3Vdc to Control Lamp Current 0V : 7.0mA, 3.3V : 4.0mA (Each Lamp)
3,4,7,8	GND	GND
5	ON / OFF	Power System Return (5V:ON, 0V:OFF)
2	NC	No Connection
6,9,10	Vin	Input Voltage : 11~13V

2.2. Output Connector CN3,5 : 20015WR-09A00 (YEON-H0, C/S)

CN2,4 : 35001WR-02A00 (YEON-H0, C/S)

CN3,5

Pin No.	Symbol	Description
1	Lamp H1	High Voltage Connection to high side of Lamp.
2	Lamp H1	High Voltage Connection to high side of Lamp.
3	Lamp L1	Low Voltage Connection to low side of Lamp.
4	Lamp L2	Low Voltage Connection to low side of Lamp.

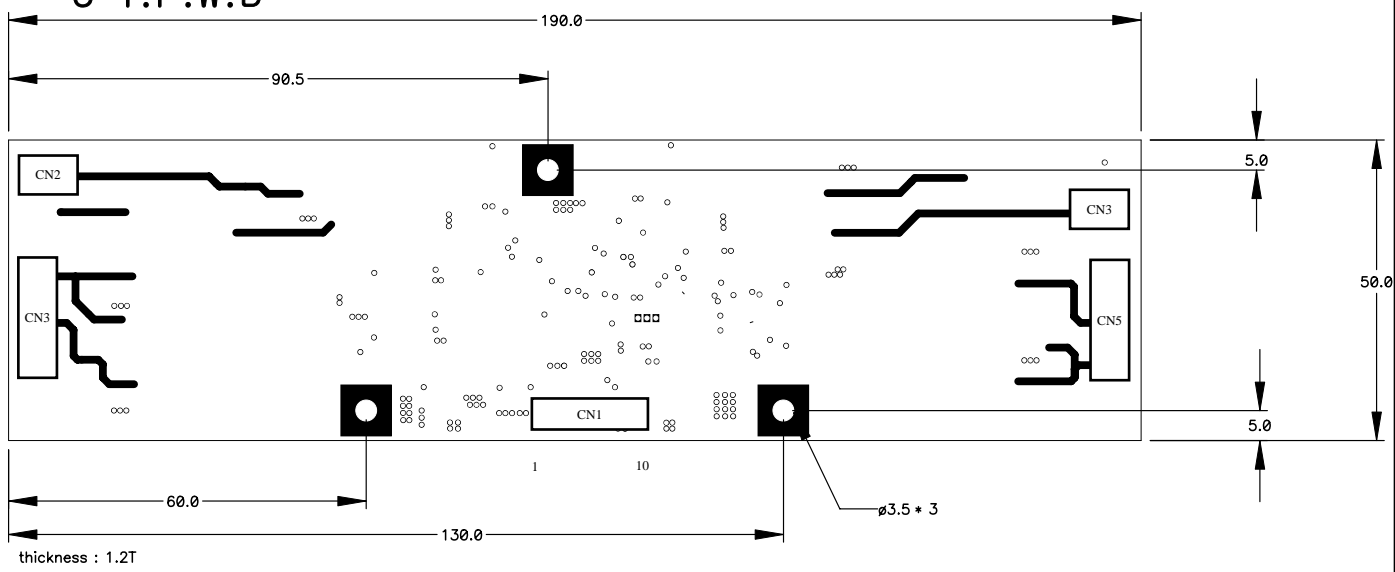
CN2,4

Pin No.	Symbol	Description
1	Lamp H1	High Voltage Connection to high side of Lamp.
2	Lamp L1	Low Voltage Connection to low side of Lamp.

3.Mechanical Drawings

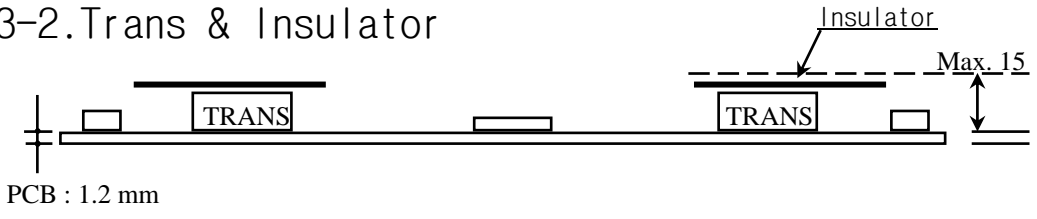
*. Unit : mm
*.Tolerance : ± 0.2mm

3-1.P.W.B

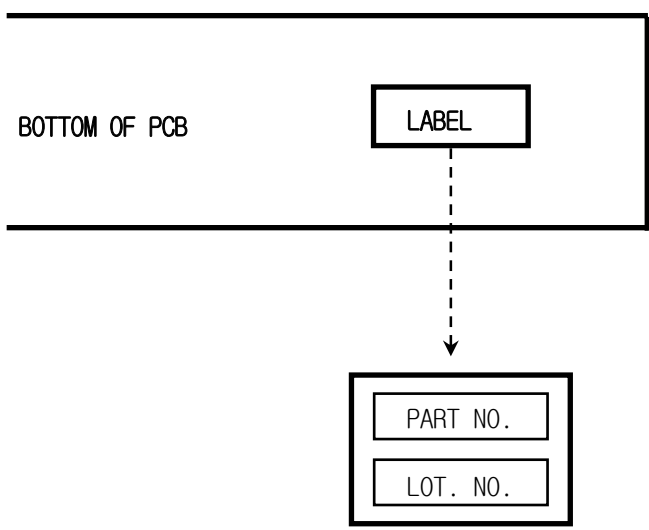


BSU

3-2.Trans & Insulator



3-3.Marking



*. PART NO. : FIF2064-31B
 *. LOT NO. : F ○ ○ ○ ○ ○ ○ ○ ○

LINE YEAR MONTH DAY