

PB-FREE

SPECIFICATION FOR REFERENCE
(FOR LCD TV/ MNT 22" 4 LAMPS APPLICATION PURPOSE)

TFT LCD BACKLIGHTING INVERTER

PART NO. FIF2242-01B

CONTENTS

- 1. Electrical Characteristics**
- 2. Functional Pin Description**
- 3. Mechanical Drawings**

APPROVED BY

PB-FREE

1. Electrical Characteristics

◎ Analog Dimming

No.	Items (Unit)	Sign.	Condition		Min.	Typ.	Max.
1	Input Current (A)	Vin			11	12	13
2	Input Current (A)	Iin	Vin=12V	CTRL=5V	1.3	1.6	1.9
				CTRL=0V	2.1	2.5	2.8
3	Output Current 1,2,3,4 (mA)	Iout1,2 3,4	Vin=12V	CTRL=5V	2.0	3.3	4.3
				CTRL=0V	6.5	7.3	8.0
4	Lamp Frequency (kHz)	f	Vin=12V	CTRL=0V	50	55	60
5	ON/OFF Control	ON	Vin=12V,	ON/OFF=5V	Normal Operation		
		OFF	Vin=12V,	ON/OFF=0V	Shunt-down (Lamp off)		
6	Dim Adjust (Lamp Current Control)	CTRL	CTRL=0V, Max Current		0 ~ 5 Volt.		
			CTRL=5V, Min Current				
7	Kick-Off Voltage (Vrms)	Vrms	Kick-Off		MORE THAN 1800		
8	Ignition time	S			Min 1 Sec.		

PB-FREE

2.Functional Pin Description

2.1. Input Connector CN1 : SMAW200-08 (YEON-HO,MOLEX,JST)

Pin No.	Symbol	Description
1,2,3	Vin	Input Voltage : 12V \pm 1V
4,5,6	GND	GND.
7	CTRL	Dim Adjust, Apply 0V ~5Vdc to Control Lamp
8	ON / OFF	Power System Return (5V:ON, 0V:OFF)

2.2. Output Connector CN2,CN3,CN4,CN5 : SM02B-BHS-1-TB (YEON-HO,MOLEX,JST)

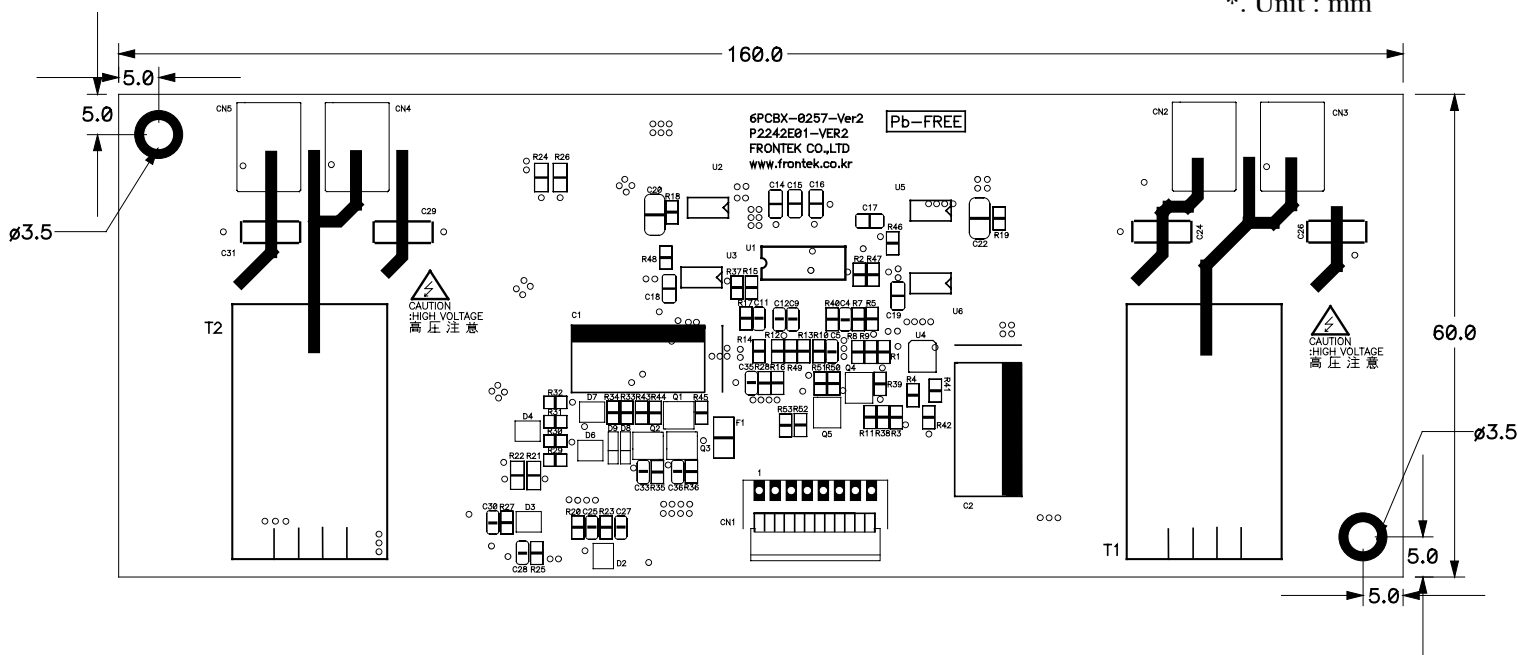
Pin No.	Symbol	Description
1	Lamp H1	High Voltage connection to high side of lamp.
2	Lamp L1	Low Voltage connection to low side of lamp.

PB-FREE

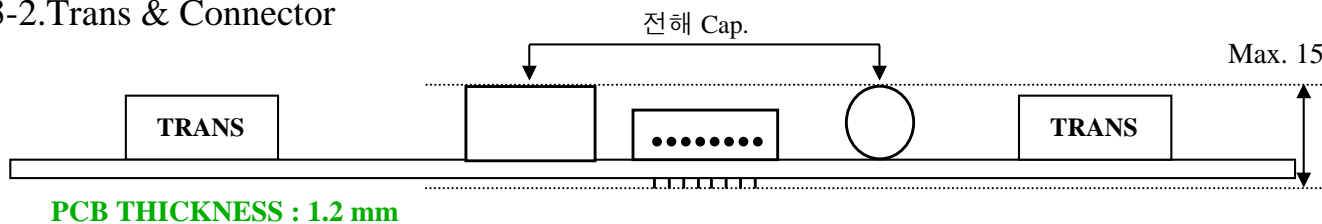
3.Mechanical Drawings

3-1.P.W.B

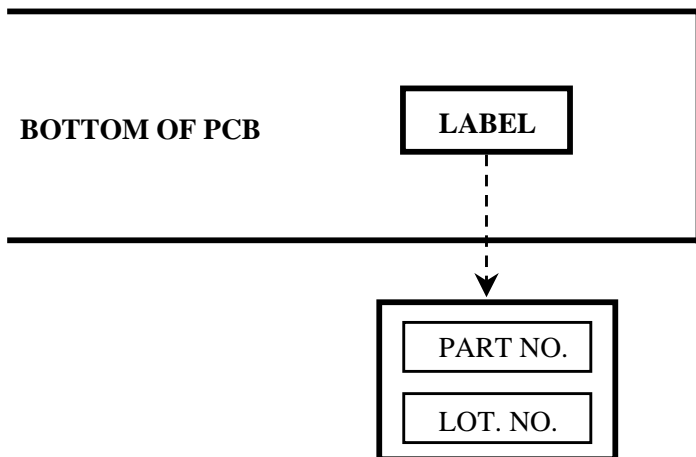
*. Unit : mm



3-2.Trans & Connector



3-3.Marking



*. PART NO. : FIF2242-01B

*. LOT NO. : F ○○○○○○○○

↙ ↘
 LINE YEAR MONTH DAY

3-4.Manufactory

This one is the approval of inverter made in frontek – Gumi plant.

This one is the approval of inverter made in frontek – China plant.