

**PB-FREE**

# **SPECIFICATION FOR REFERENCE**

(FOR LCD TV/ MNT 22" 4 LAMPS APPLICATION PURPOSE)

TFT LCD BACKLIGHTING INVERTER

PART NO. FIF2242-04A

## **CONTENTS**

- 1. Electrical Characteristics**
- 2. Functional Pin Description**
- 3. Mechanical Drawings**

**PB-FREE****1.Electrical Characteristics**

© Analog Dimming

NO	Items (Unit)	Sign.	Condition		Min.	Typ.	Max.
1	Input Voltage [Vdc]	Vin			11.5	12	12.5
2	Input Current [A]	Iin	Vin=12V	CTRL=5V	1.2	1.6	2.0
				CTRL=0V	2.0	2.4	2.8
3	Output Current 1,2,3,4 [mA]	Iout	Vin=12V	CTRL=5V	2.5	3.5	4.5
				CTRL=0V	6.0	7.0	8.0
4	Lamp Frequency [kHz]		Vin=12V	CTRL=0V	42	47	52
5	ON/OFF Control	ON	Vin=12V, ON/OFF=5V		Normal Operation		
		OFF	Vin=12V, ON/OFF=0V		Shut - Down (Lamp Off)		
6	Dim Adjust (Lamp Current Control)	CTRL	CTRL=0V, Max Current		0~5 V		
			CTRL=5V, Min Current				
7	Kick-Off Voltage [Vrms]	Vk-off	More Than 1800V				
8	Ignition Time [sec]	Sec	More Than 1Sec				

**PB-FREE**

## 2.Functional Pin Description

### 2.1. Input Connector CN1 : JS-1125R-06(Chayo-Shiunn)

Pin No.	Symbol	Description
1,2	Vin	Input Voltage : 12V $\pm$ 0.5V
3	ON / OFF	Power System Return ( 5V:ON, 0V:OFF )
4	CTRL	Dim Adjust, Apply 0V ~5Vdc to Control Lamp Current 0V : 7.0mA, 5V : 3.5mA (Each Lamp)
5,6	GND	GND

### 2.2. Output Connector CN2,CN3,CN4,CN5 : 35001WR-02A00 (Yeon ho)

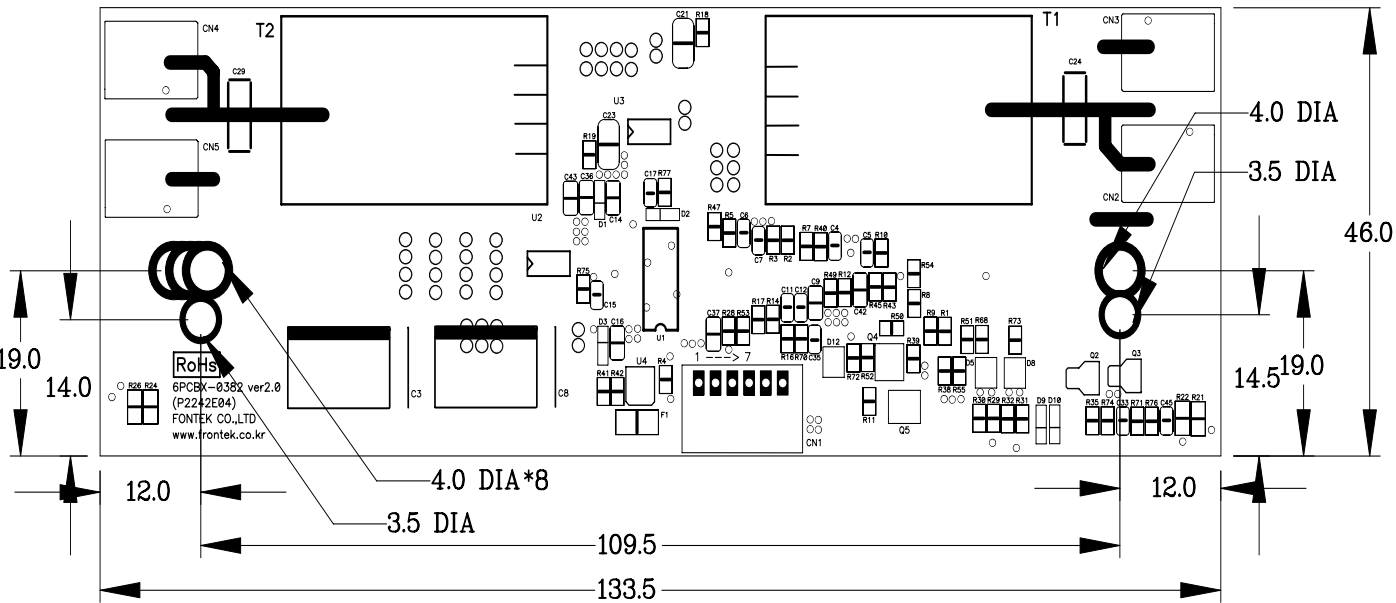
Pin No.	Symbol	Description
1	Lamp H1	High Voltage Connection to high side of Lamp.
2	Lamp L1	LOW Voltage Connection to high side of Lamp.

**PB-FREE**

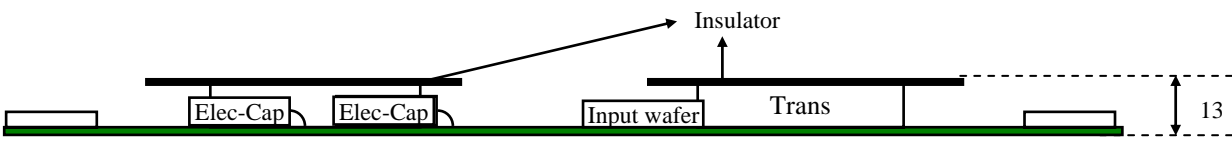
### 3.Mechanical Drawings

#### 3-1.P.W.B

\*. Unit : mm

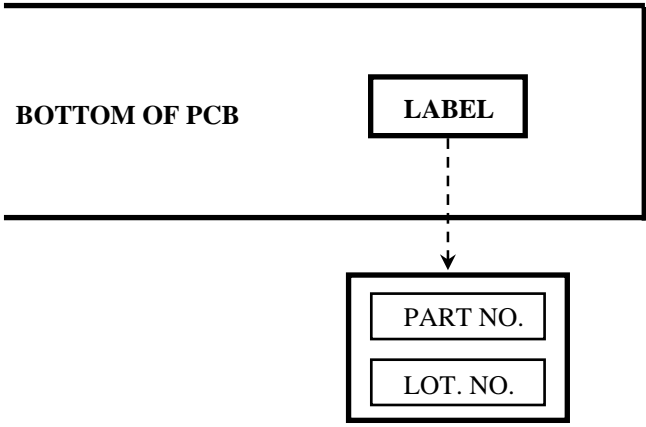


#### 3-2.Trans & Connector



PCB THICKNESS : 1.2 mm

#### 3-3.Marking



\*.PART NO: FIF2242-04A  
 \*.LOT NO.: F000000000

F : FRONTEK  
 0 : LINE  
 00: YEAR  
 00: MONTH  
 00: DAY  
 00: MANUFACTURE

#### 3-4.Manufactory

This one is the approval of inverter made in frontek – Gumi plant.  
 This one is the approval of inverter made in frontek – China plant.