

FOR MESSRS :

SafetyRoHS

SPECIFICATION FOR REFERENCE

(FOR CCFL 4LAMP APPLICATION PURPOSE)

TFT LCD BACKLIGHTING INVERTER

PART NO. : FIF2242-10A

BUYER'S PART NO. :

CONTENTS

- 1. Electrical Characteristics**
- 2. Functional Pin Description**
- 3. Mechanical Drawings**

1. Electrical Characteristics

- Analog dimming

NO	Items (Unit)	Sign.	Condition		Min.	Typ.	Max.
1	Input Voltage [Vdc]	Vin			11.5	12	12.5
2	Input Current [A]	Iin	Vin=12V	CTRL=5V	1.2	1.6	2.0
				CTRL=0V	2.0	2.4	2.8
3	Output Current 1,2,3,4 [mA]	Iout	Vin=12V	CTRL=5V	2.5	3.5	4.5
				CTRL=0V	6.0	6.8	7.6
4	Lamp Frequency [kHz]		Vin=12V	CTRL=0V	45	50	55
5	ON/OFF Control	ON	Vin=12V, ON/OFF=5V		Normal Operation		
		OFF	Vin=12V, ON/OFF=0V		Shut – Down (Lamp Off)		
6	Dim Adjust (Lamp Current Control)	CTRL	CTRL=0V, Max Current		0~5 V		
			CTRL=5V, Min Current				
7	Kick-Off Voltage [Vrms]	Vk-off	More Than 1400V				
8	Ignition Time [sec]	Sec	More Than 1Sec				

2. Functional Pin Description

2.1. Input Connector CN1 : JS-1125R-06 (CHAOSIN)

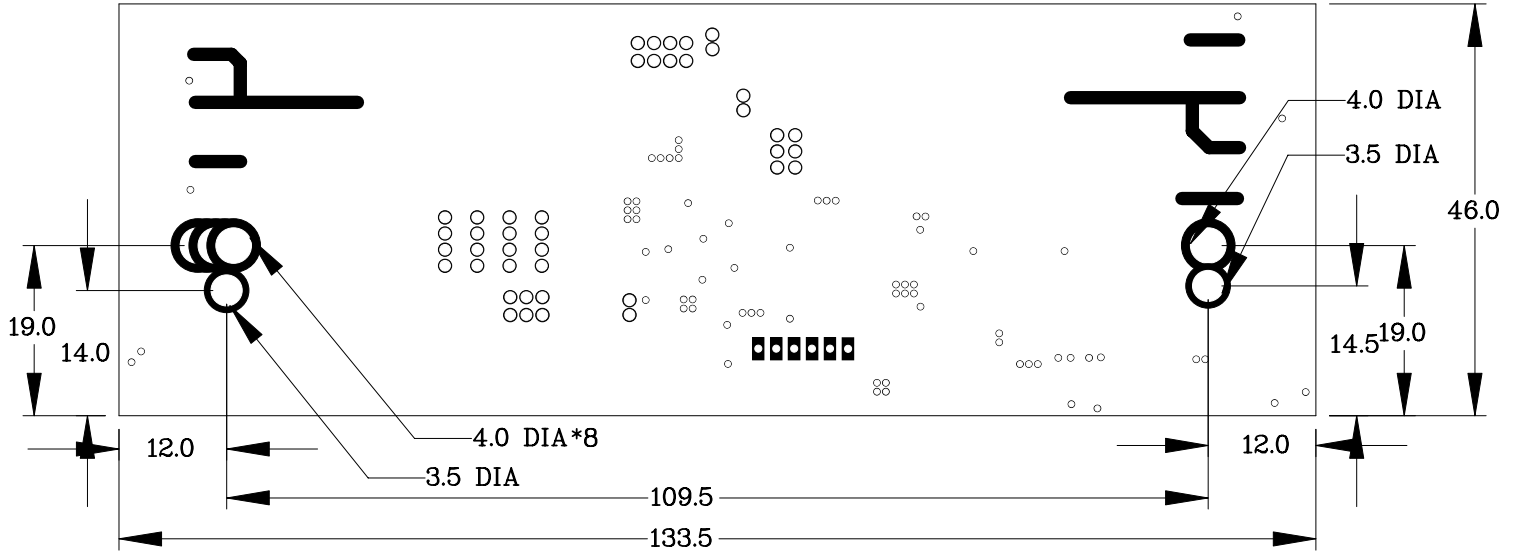
Pin No.	Symbol	Description
1,2	Vin	Input Voltage : 12V (11.5 ~ 12.5V)
3	ON / OFF	Power System Return (5V:ON, 0V:OFF)
4	CTRL	Dim Adjust, Apply 0V ~ 5Vdc to Control Lamp Current 0 V : 6.8mA, 5V : 3.5mA (Each Lamp)
5,6	GND	GND

2-2. Output Connector CN2,CN3,CN4,CN5 : 35002WR-02A00 (YEON-HO)

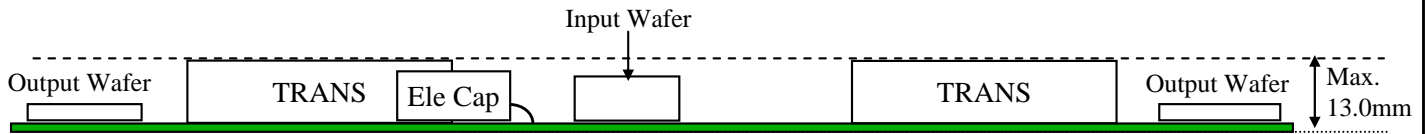
Pin No.	Symbol	Description
1	Lamp H1	High Voltage Connection to high side of Lamp.
2	Lamp L1	Low Voltage Connection to low side of Lamp.

3.Mechanical Drawing

3-1.P.W.B

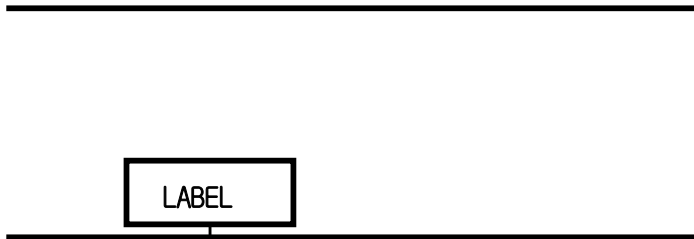


3-2.Trans & Insulator



PCB : 1.2 mm

3-3.Marking



*.PART NO: FIF2242-10A
*.LOT NO.: F000000000

F : FRONTEK
0 : LINE
00: YEAR
00: MONTH
00: DAY
00: MANUFACTURE

